

Research In Motion

How to install more BlackBerry smart phone simulators

For BlackBerry SmartPhones

Prosanta Bhattacharjee



09

Contents

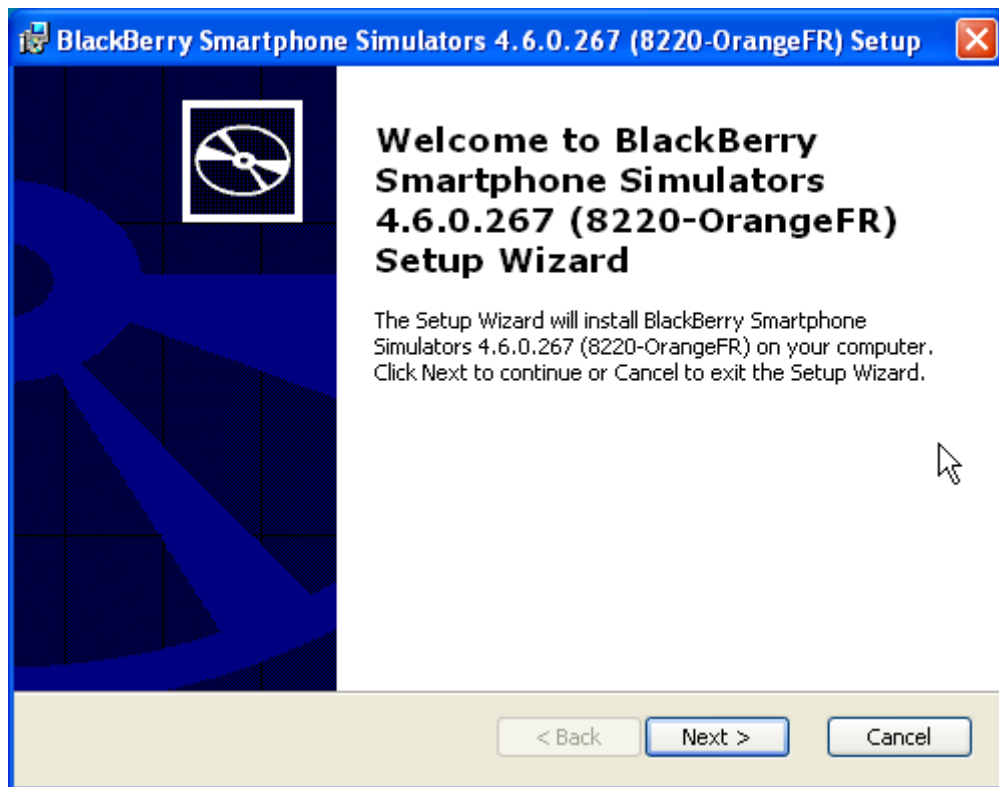
Introduction.....	3
Installation.....	4
Links.....	8

Introduction

This tutorial will cover how to download and install multiple versions of the BlackBerry Smartphone simulator and run them concurrently. The BlackBerry Smartphone simulator is a crucial tool in designing and debugging your applications, both web and java based, and having a wide variety of devices to test on will ensure that your application will function as desired to as broad an audience as possible. The simulators behave very similar to an actual device, and have the ability to simulate virtually every facet of the BlackBerry Smartphone from network strength to supported features.

Installation

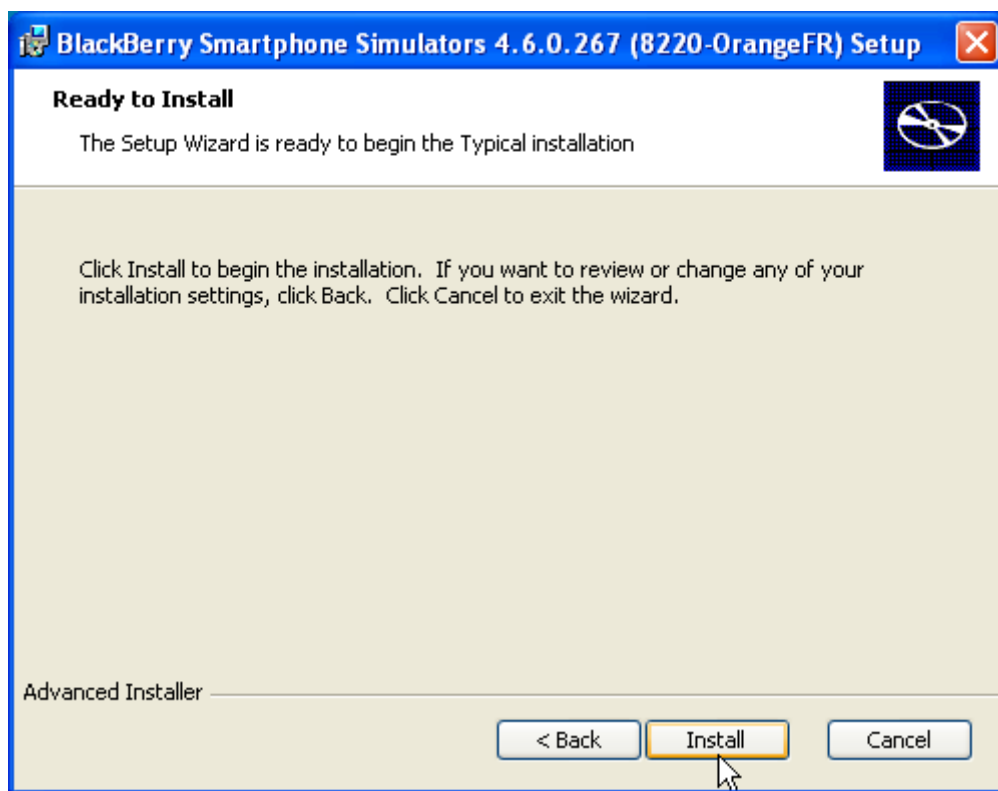
1. Download the simulator installer package from the BlackBerry Developers website (<http://na.blackberry.com/eng/developers/resources/simulators.jsp>)
2. Launch the installer



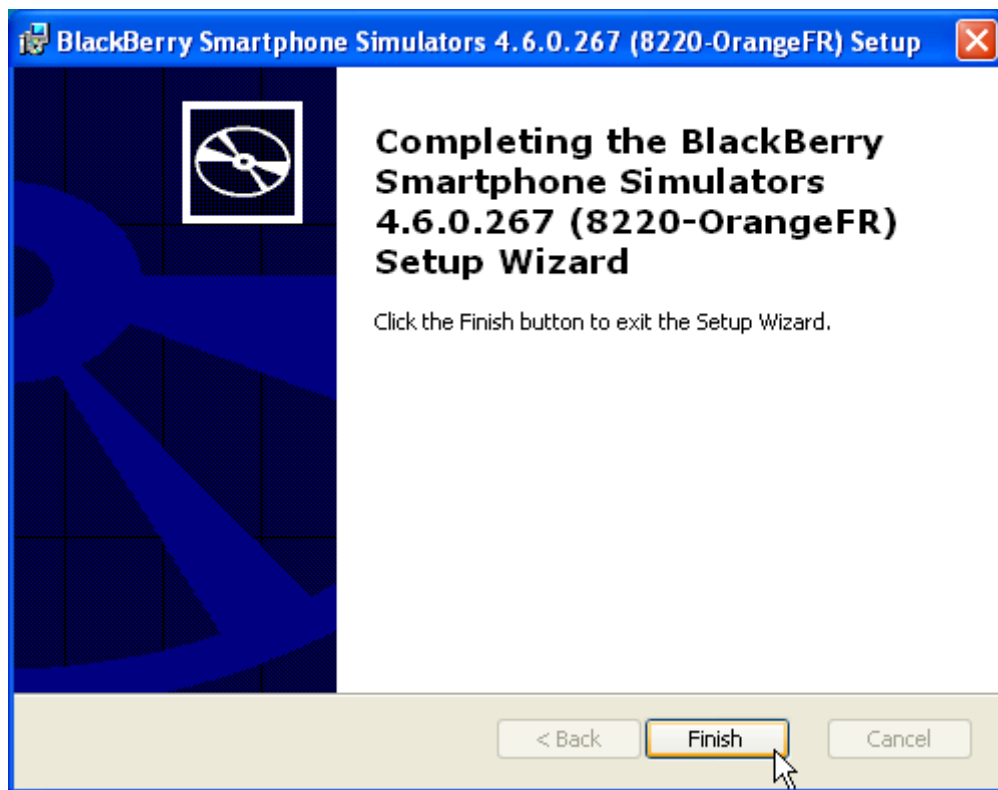
3. Read the license agreement, if you accept, select the radio button next to "I accept the terms in the license agreement" and click "Next"

4. Select the directory to install the simulator to. It is recommended to install each version of the simulator into its own directory since some of the filenames could conflict if they are all installed to the same directory. Take note of the default directory, and use a similar directory structure for your install directory.
 - a. C:\Program Files\Research In Motion\BlackBerry Smartphone Simulators 4.6.0\4.6.0.267 (8220-OrangeFR)\

C:\[parent directory]\[Operating system major version]\[Operating system minor version]
5. Once the install directory has been selected, click 'Next'
6. To begin the install, click 'Install'



7. Once the simulator is installed, click the 'Finish' button



8. If you need to run content over a network (such as loading a website or a widget that is using Web Services from a web server on the internet), you will need to install the MDS-CS simulator as well, which is also found on the BlackBerry developer website, the MDS services simulator
<https://www.blackberry.com/Downloads/entry.do?code=F9BE311E65D81A9AD8150A60844BB94C>
9. Once the simulator is installed, browse to the install directory and launch fledgelauncher.exe, select the simulator you wish to use and click 'Go'



10. This will launch your BlackBerry Smartphone simulator. An important reminder, that you can only have one simulator launched at a time, this is because they use the same ports, and will conflict if you open more than one at a time.



Links

BlackBerry Widgets Web Site:

<http://www.blackberry.com/developers/widget>

BlackBerry Developers Web Site:

<http://na.blackberry.com/eng/developers/>

BlackBerry App World:

<http://na.blackberry.com/eng/developers/appworld.jsp>

BlackBerry Enterprise Server:

<http://na.blackberry.com/eng/services/server/>

BlackBerry Web Loader:

<http://www.blackberry.com/developers/downloads/webloader/>

Developer Video Library:

<http://na.blackberry.com/eng/developers/resources/videolibrary.jsp>

Documentation:

<http://na.blackberry.com/eng/support/docs/developers/?userType=21>

Knowledge Base Articles:

<http://www.blackberry.com/knowledgecenterpublic/livelink.exe/fetch/2000/348583/customview.html?func=ll&objId=348583>

Forums:

<http://supportforums.blackberry.com/rim/?category.id=BlackBerryDevelopment>

